



NOBU BANGKOK FESTIVE STARLIT SEASON

A LUMINOUS PERIOD OF SPARKLE, SKYLINE, AND ENDLESS CELEBRATION.

WHAT'S ON



17:30 – 00:00 hrs **KANPAI IN THE CLOUDS**
Event Terrace



11:30 – 15:00 hrs **CHRISTMAS BRUNCH, NOBU STYLE**
Nobu Dining



17:30 – 21:30 hrs **CHRISTMAS OMAKASE CELEBRATION**
Terrace Dining, Main Dining
and Lounge Dining



20:00 – 01:00 hrs **MIDNIGHT SPARK AT NOBU**
Event Terrace
**A NEW YEAR'S EVE
OMAKASE CELEBRATION**
Main Dining, Lounge Dining and Bar Lounge
**A NEW YEAR'S EVE OMAKASE AND
SPARKLE CELEBRATION**
Terrace Dining
GREAT GATSBY SKY HIGH
Nobu Rooftop

KANPAI IN THE CLOUDS

Nobu Bangkok's festive season begins with glittering Kanpai in the Clouds, where skyline views meet lively beats. Sip crafted cocktails and fine wines, savor gourmet bites, and dance the night away to electrifying sets from our live DJs.

DATE: DECEMBER 22-30, 2025

TIME: 17:30 HRS UNTIL MIDNIGHT

LOCATION: 57TH EVENT TERRACE

✦ **THB 880 NET** PER PERSON

Including One Drink



CHRISTMAS BRUNCH, NOBU STYLE

Celebrate Christmas Brunch at Nobu with exquisite starters from sashimi to Nobu tacos, a lavish seafood spread, delectable mains, and indulgent desserts. Elevate your experience with curated beverage packages, festive entertainment, live DJ, saxophone and holiday delights.

DATE: DECEMBER 25, 2025

TIME: 11:30-15.00 HRS

LOCATION: NOBU DINING

* CHRISTMAS BRUNCH **THB 4,900++** PER PERSON
Including Food and Unlimited Soft Drinks

* FESTIVE INDULGENCE **THB 6,800++** PER PERSON
Including Food, Unlimited Champagne Bollinger Brut NV, Festive Cocktails, Premium Spirits, White & Red Wine, Draught Beer and Soft Drinks



CHRISTMAS OMAKASE CELEBRATION

Celebrate Christmas the Nobu way with a dazzling six-course omakase menu featuring signature creations from creamy spicy crab to wagyu short rib. Paired with panoramic views and festive touches, this extraordinary holiday dining experience is truly unforgettable.

DATE: DECEMBER 24-25, 2025

TIME: 17:30-01:00 HRS *(last orders at 21:30 hrs)*

LOCATION: TERRACE DINING, MAIN DINING
AND LOUNGE DINING

* THB 4,900++ PER PERSON



A woman with dark, curly hair, wearing a black dress and a multi-strand pearl necklace, is holding two glasses of champagne. She is wearing a black glove on her left hand and has dark blue nail polish on her right hand. The glasses are filled with champagne and have a lemon slice floating in each. The background is dark and out of focus.

6-COURSE CHRISTMAS OMAKASE

Yuba Chips Creamy Spicy Crab
Yaki Tuna Truffle Carpaccio
Sushi Selection
Scallop Shitake Yuzu Truffle
Wagyu Short Rib Spicy Akadashi Miso
Chocolate Orange

MIDNIGHT SPARK AT NOBU

Ring in the New Year at Nobu Bangkok's terrace countdown party, where Bollinger Champagne flows, canapés delight, and sake and tequila shots set the tone. Dance to electrifying DJ beats as midnight ignites an unforgettable night of celebration.

DATE: DECEMBER 31, 2025

TIME: 20:00-01:00 HRS

LOCATION: 57TH EVENT TERRACE

* **THB 20,000 NET PER PERSON** (*regular*)

* **THB 17,000 NET PER PERSON** (*early bird*)





MIDNIGHT SPARK AT NOBU

OFFER INCLUDES:

Unlimited Canapés, Champagne Bollinger Brut NV,
Signature Cocktails, Premium Spirits,
White & Red Wine, Nobu Sake, Beer, Mocktails,
and Soft Drinks

A NEW YEAR'S EVE OMAKASE CELEBRATION

Ring in the New Year at Nobu with a sumptuous six-course omakase, artfully crafted by master chefs, complemented by premium beverages, creating an unforgettable evening of elegance, indulgence, and festive celebration above Bangkok's dazzling skyline.

DATE: DECEMBER 31, 2025

TIME: 20:00-01:00 HRS

LOCATION: INDOOR ONLY

57TH FLOOR BAR LOUNGE

58TH FLOOR MAIN DINING AND
LOUNGE DINING

* **THB 10,600 NET PER PERSON** *(regular)*

* **THB 9,000 NET PER PERSON** *(early bird)*



A woman in a black dress and pearl necklace is holding two champagne glasses. The glasses are filled with champagne and have a lemon slice in each. The background is dark and out of focus.

A NEW YEAR'S EVE OMAKASE CELEBRATION

6-COURSE NEW YEAR'S EVE OMAKASE

Wasabi Potato Crab Caviar
Santenmori
Sushi Selection
Daikon Unagi Foie Gras
Wagyu Beef Tosazu Butter
Chocolate Cherry Champagne

COMPLIMENTARY ACCESS:
Countdown at Terrace Dining
from 23:30 hrs onwards.

A NEW YEAR'S EVE OMAKASE AND SPARKLE CELEBRATION

Celebrate New Year's Eve at Nobu with a six-course omakase, perfectly paired with curated beverage packages featuring Bollinger Champagne. Enjoy a sparkling evening of exquisite flavors, refined indulgence, and festive sophistication in the heart of Bangkok.

DATE: DECEMBER 31, 2025

TIME: 20:00-01:00 HRS

LOCATION: 58TH FLOOR TERRACE DINING

* **THB 27,500 NET PER PERSON** (*regular*)

* **THB 23,000 NET PER PERSON** (*early bird*)



A woman with dark hair, wearing a black dress and a long pearl necklace, is holding two champagne glasses. The glasses are filled with a golden liquid and have a slice of citrus fruit floating in them. The background is dark and out of focus.

A NEW YEAR'S EVE OMAKASE AND SPARKLE CELEBRATION

6-COURSE NEW YEAR'S EVE OMAKASE

Wasabi Potato Crab Caviar
Santenmori
Sushi Selection
Daikon Unagi Foie Gras
Wagyu Beef Tosazu Butter
Chocolate Cherry Champagne

OFFER INCLUDES:

Unlimited Champagne Bollinger Brut NV,
Signature Cocktails, Premium Spirits, White & Red Wine,
Nobu Sake, Beer, Mocktails, and Soft Drinks

GREAT GATSBY SKY HIGH

Join the ultimate New Year's Eve soirée at Nobu Rooftop. "Great Gatsby on the Roof" dazzles with live entertainment, DJs, free-flow Champagne, exquisite cocktails, and gourmet canapés—an unforgettable night of elegance, music, and celebration above Bangkok's skyline.

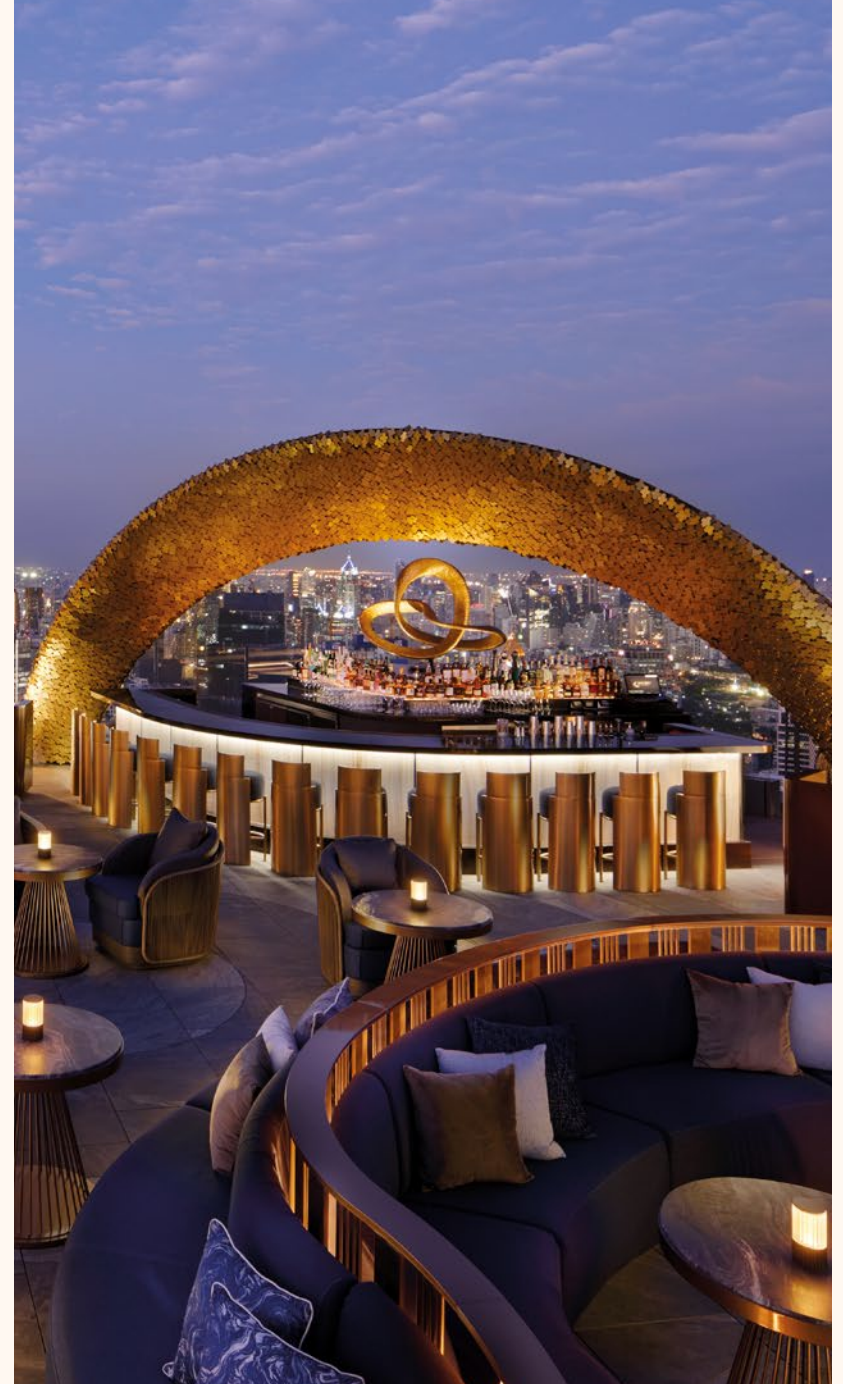
DATE: DECEMBER 31, 2025

TIME: 20:00-01:00 HRS.

LOCATION: 60TH NOBU ROOFTOP

* **THB 57,800 NET PER PERSON** (*regular*)

* **THB 49,000 NET PER PERSON** (*early bird*)





GREAT GATSBY SKY HIGH

OFFER INCLUDES:

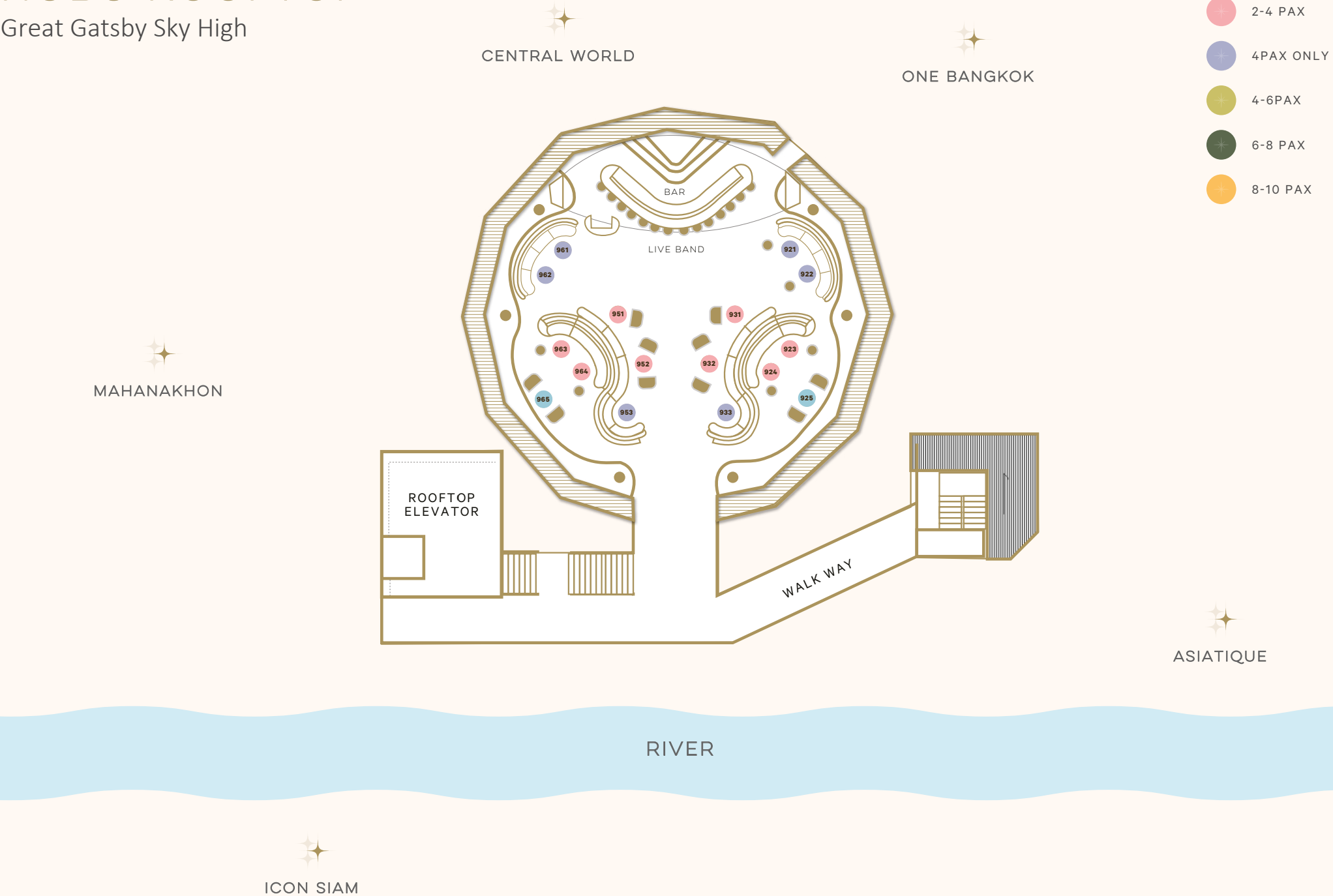
Unlimited Canapés, Champagne Bollinger Brut NV,
Signature Cocktails, Premium Spirits,
White & Red Wine, Nobu Sake, Beer, Mocktails,
and Soft Drinks

EXTRA:

1 bottle of Champagne Bollinger La Grande Année 2015
per 2 guests

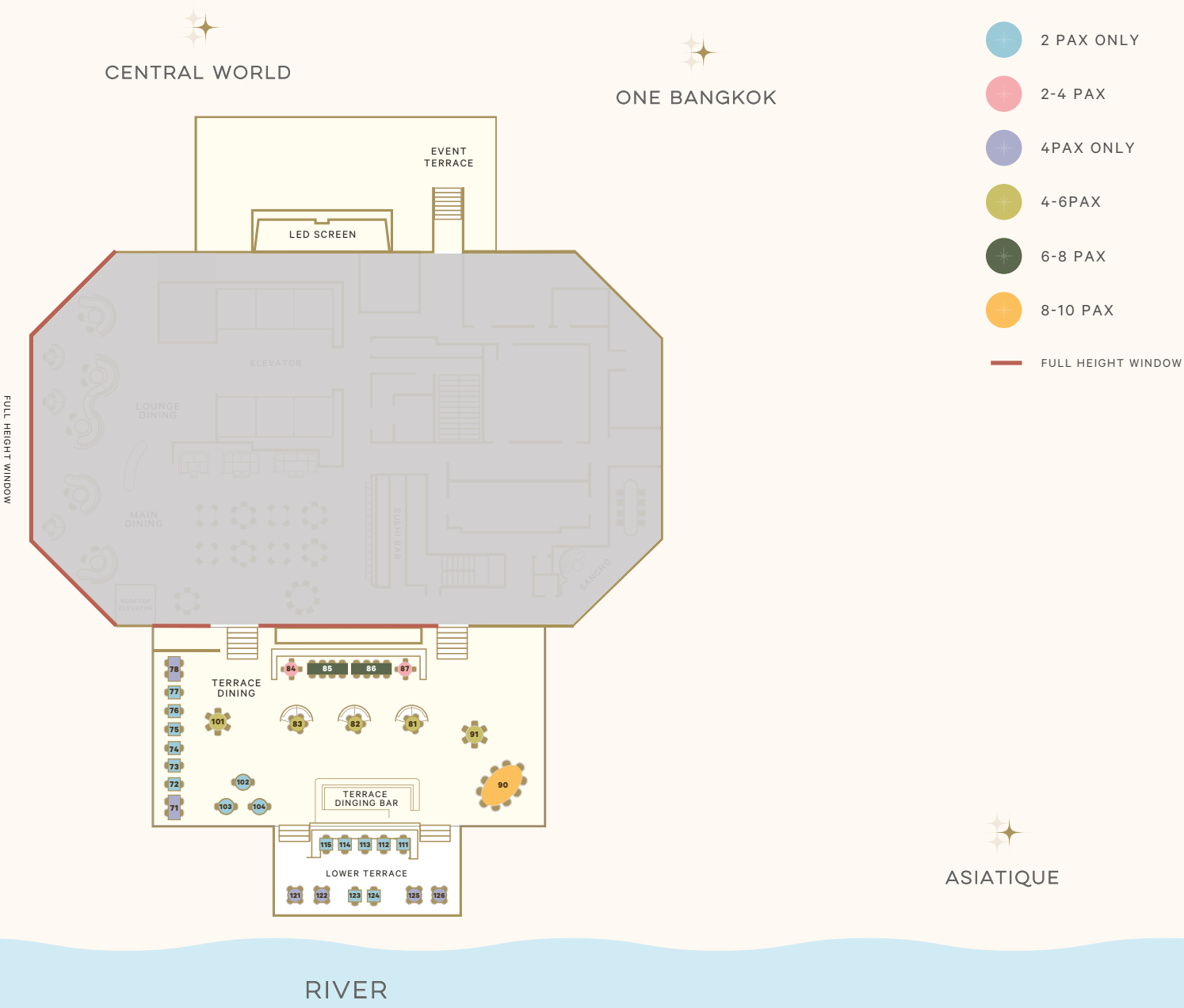
NOBU ROOFTOP

Great Gatsby Sky High



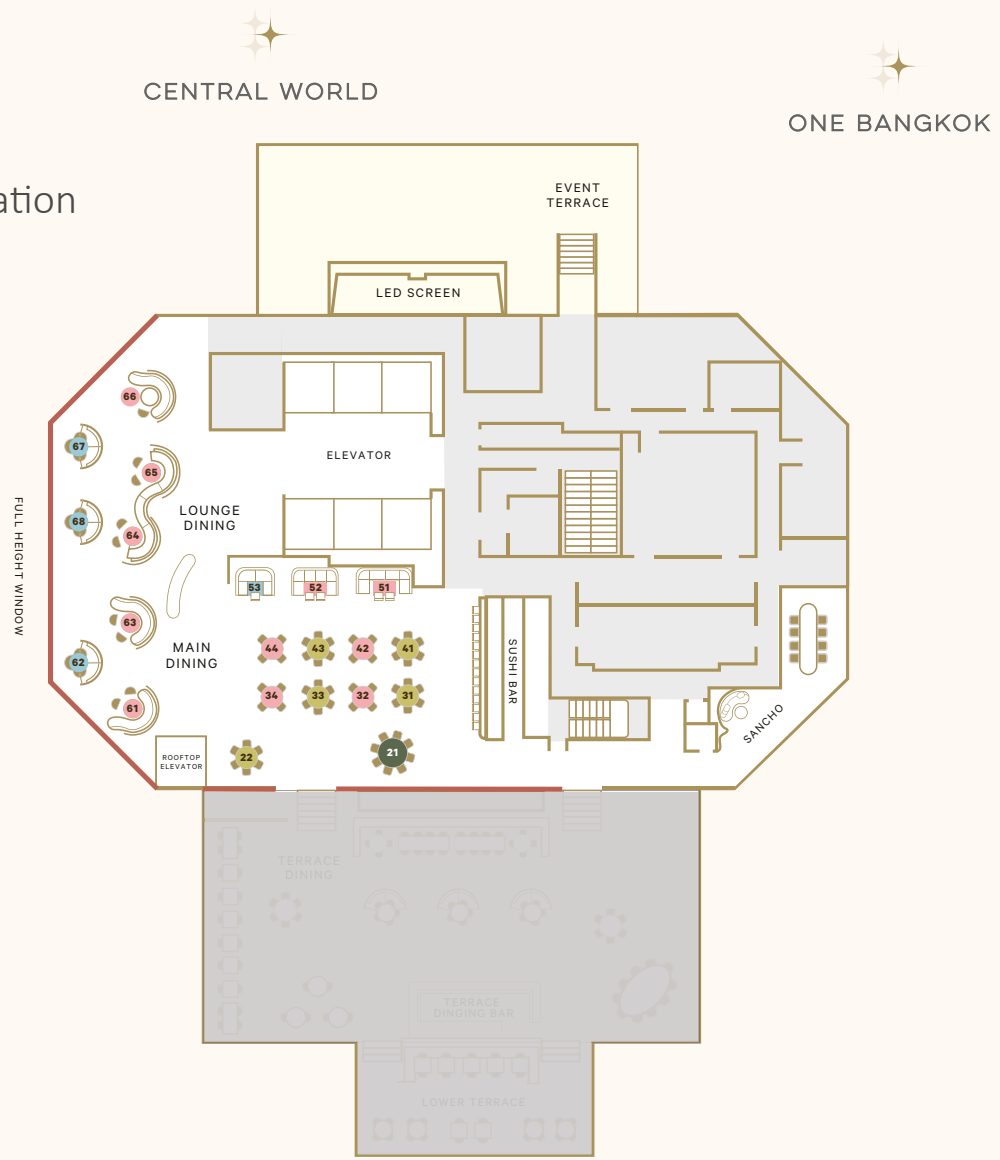
TERRACE DINING

A New Year's Eve Omakase
and Sparkle Celebration



MAIN DINING & LOUNGE DINING

A New Year's Eve Omakase Celebration



- 2 PAX ONLY
- 2-4 PAX
- 4PAX ONLY
- 4-6PAX
- 6-8 PAX
- 8-10 PAX
- FULL HEIGHT WINDOW

MAHANAKHON

ONE BANGKOK

ASIATIQUE

ICON SIAM

BAR LOUNGE

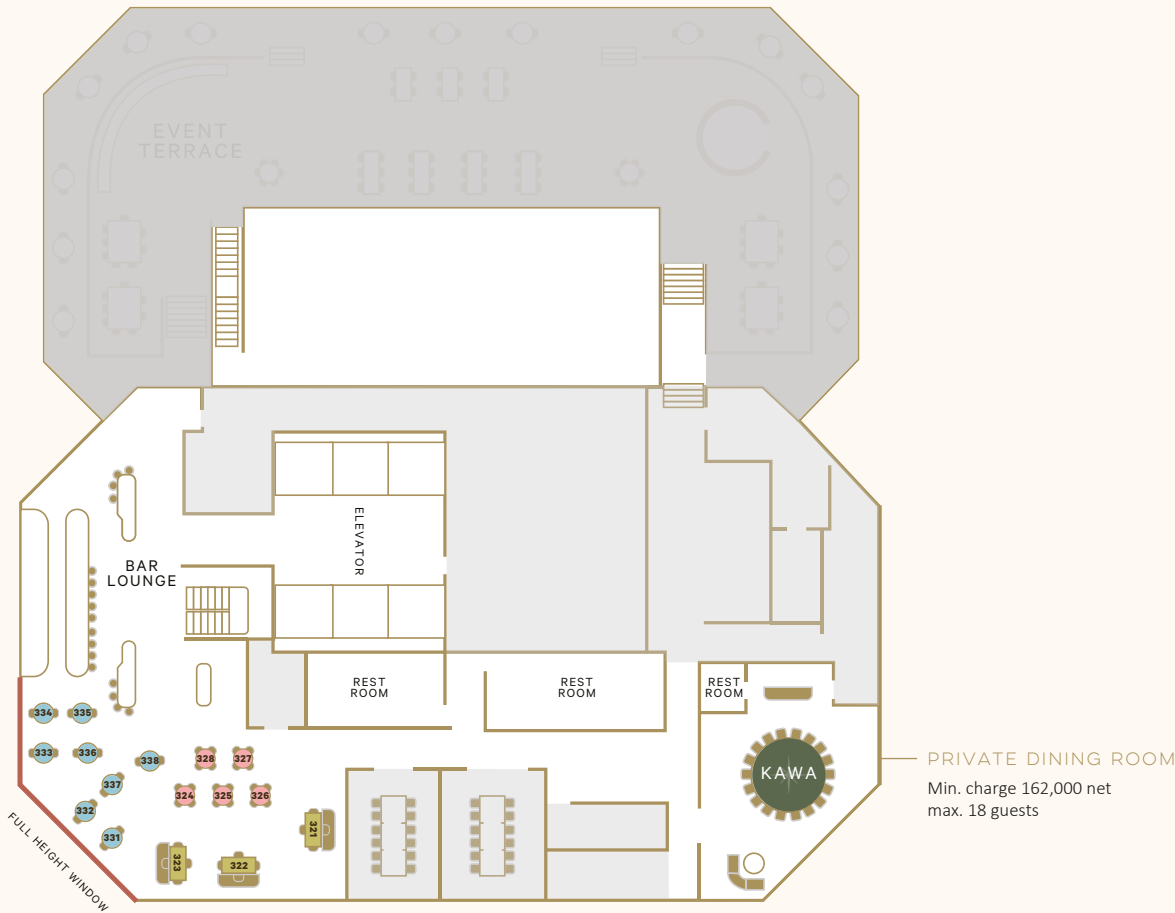
A New Year's Eve
Omakase Celebration

MAHANAKHON

CENTRAL WORLD

ONE BANGKOK

- 2 PAX ONLY
- 2-4 PAX
- 4PAX ONLY
- 4-6PAX
- 6-8 PAX
- 8-10 PAX
- FULL HEIGHT WINDOW



PRIVATE DINING ROOM
Min. charge 162,000 net
max. 18 guests

ASIATIQUE

ICON SIAM

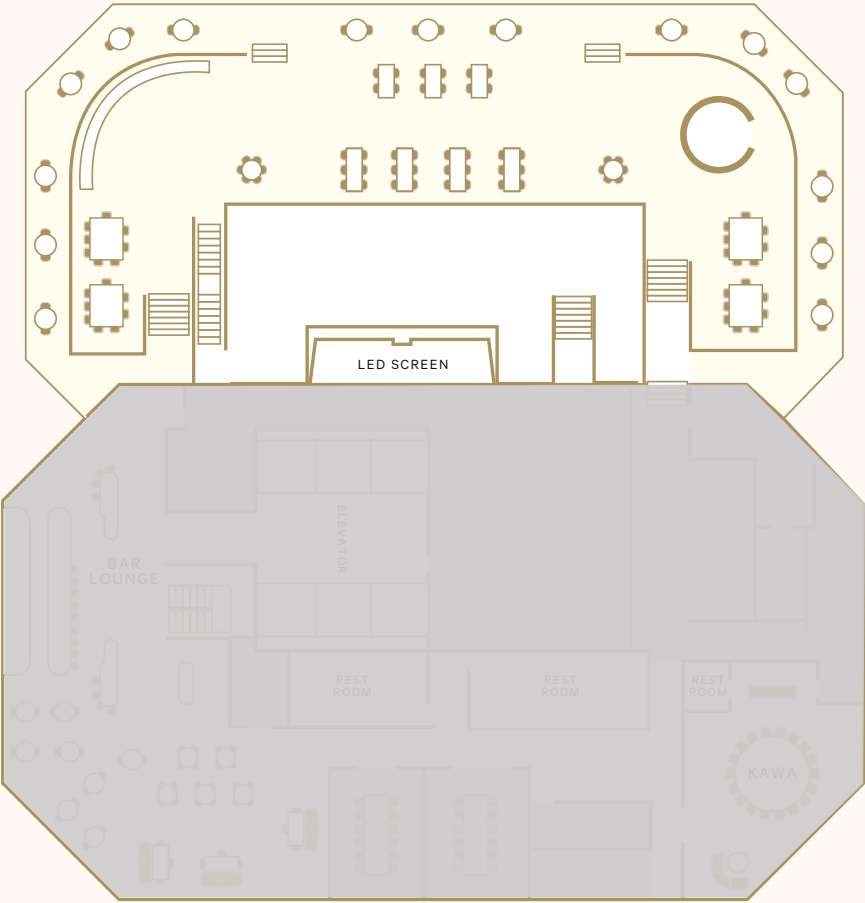
EVENT TERRACE

Midnight Spark at Nobu

MAHANAKHON

CENTRAL WORLD


ONE BANGKOK



- 2 PAX ONLY
- 2-4 PAX
- 4PAX ONLY
- 4-6PAX
- 6-8 PAX
- 8-10 PAX
- FULL HEIGHT WINDOW

ASIATIQUE

ICON SIAM

The image shows the exterior of a NOBU restaurant at night. A large, illuminated 'NOBU' sign is mounted on a dark, vertically-ribbed wall. Below the sign is a dense, dark green hedge with two vertical light fixtures. In the foreground, there are large, orange-red cushions and a table. A large, decorative light structure made of many thin, intersecting lines is visible in the background, creating a starburst effect.

NOBU

FOR MORE INFORMATION
OR RESERVATIONS
PLEASE CONTACT

* +66 80 071 2634

* MHS.EMPIRE.NOBU@MARRIOTTHOTELS.COM

NOBURESTAURANTS.COM/BANGKOK